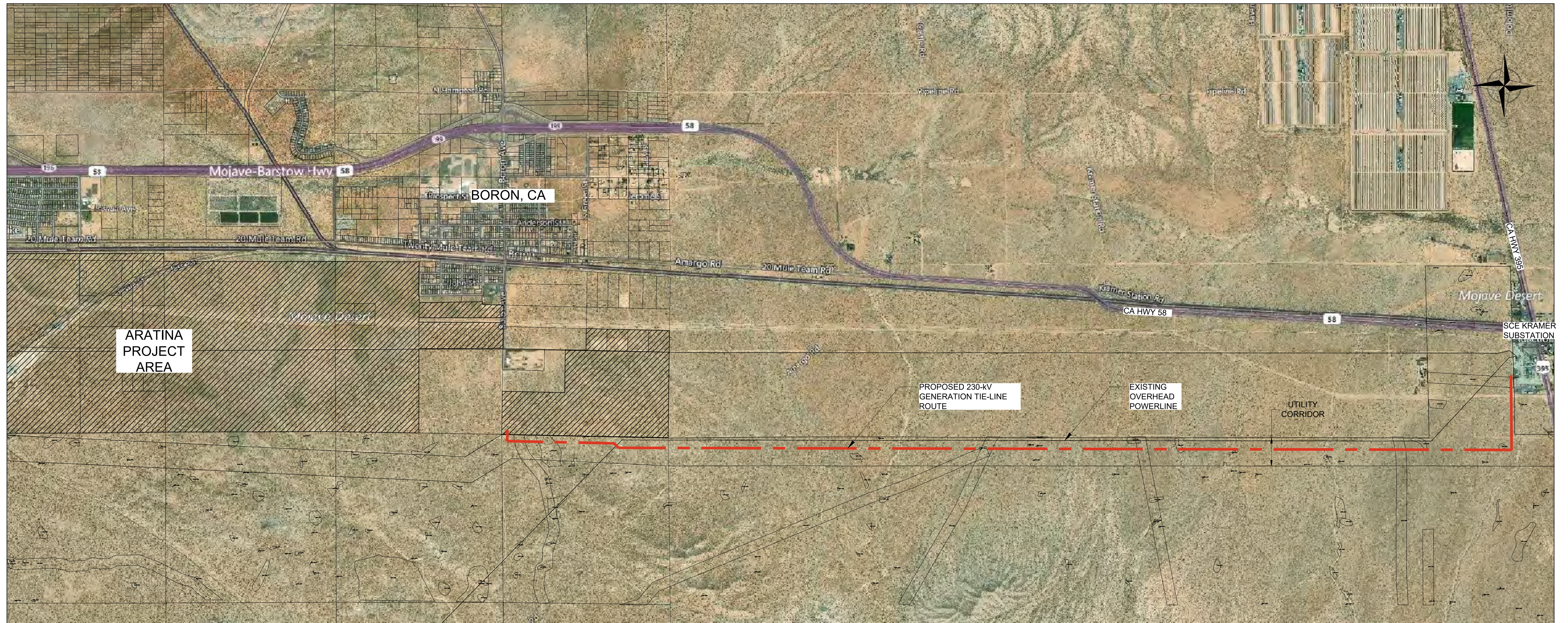


Appendix A. Preliminary Plan and Profile – Double Circuit

Enclosed is a series of plates that outline the plan for a double circuit.



DISTURBANCE SUMMARY TABLE

Single-Pole Structures, Tangent	46 Each
Double-Pole Structures, Deadend and Angle	5 Each
Six-Pole Structures, Line Crossings	2 Each
Total Number of Ground-Mounted Fiber Splice Cabinets	2 Each
Area of Ground-Mounted Fiber Splice Cabinet	8 Sq. Ft
New Access Road from Sta 0+000 to 3+224, 12ft-wide	3224 Ft
Spur Roads from 3+525 to 28+970, 12ft-wide	25445 Ft
New Access Road from Sta 28+970 to 32+919, 12ft-wide	3949 Ft
Total Acreage of Permanent Disturbance	8.992 Acres

Total Number of Structures	53 Each
Area of Disturbance for Stringing Location, Not Included in the Easement	188222 Sq. Ft
Construction Disturbance, Outside of Easement, Not Previously Included	0 Sq. Ft
Additional Disturbance for Trench Excavation for Redundant Fiber-Optic Line	25676 Ft
Length of 12ft Wid Construction Access Road Needed	7173 Ft
Total Acreage of Temporary Disturbance	6.592 Acres

Stringing Site assumed to be 400ft x 100ft
 Disturbance at each pole assumed to be 150ft x 50ft
 Total Length Less the area counted as temporary construction disturbance, 6in trench
 New Sta 0+000 to 3+224, Spurs 3+525 to 28+970, New 28+970 to 32+919

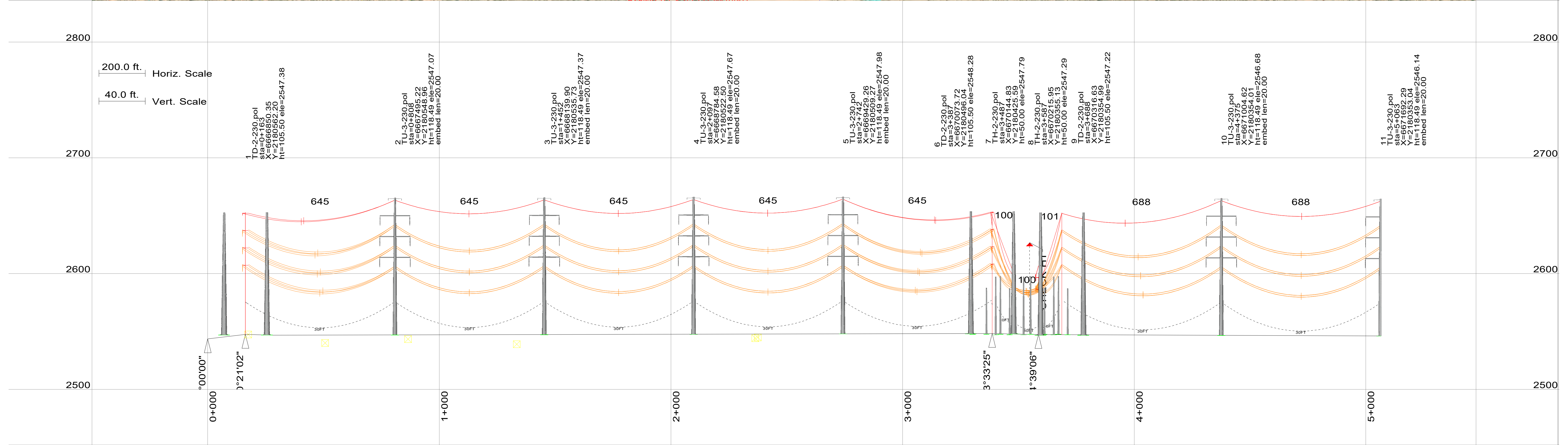
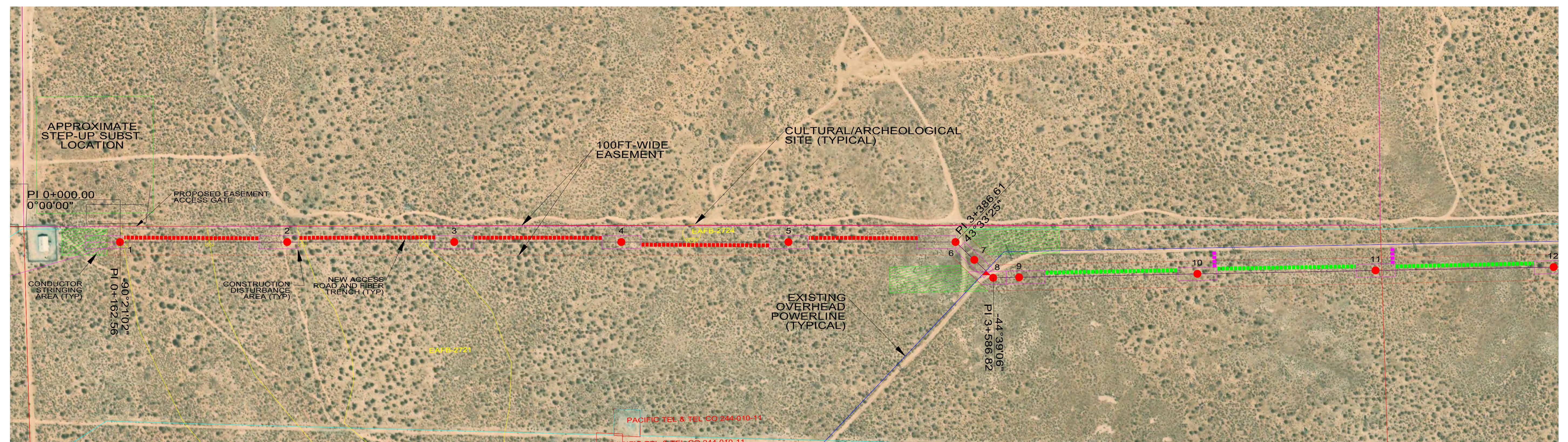
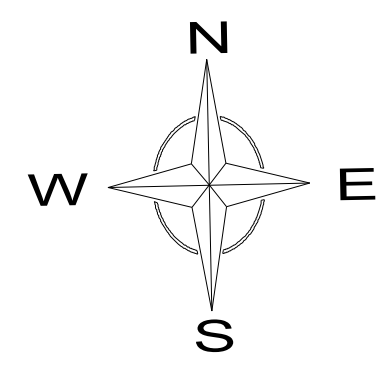
NO.	REVISION	DATE	BY
F	REVISE DISTURBANCES, ADD EASEMENT	4/8/21	MDP
E	ADD EST. HEIGHT/DEPTH	4/5/21	MDP
D	ADD FIBER TRENCH DISTURBANCE	7/24/20	MDP
C	ADD DISTURBANCE AREAS	7/14/20	MDP
B	REVISED SUBST LOC	2/11/20	MDP
A	FOR REVIEW	11/20/19	MDP

ARATINA SOLAR PROJECT

8MINUTE SOLAR ENERGY
 PRELIMINARY PLAN/PROFILE
 230-kV GENERATION TIE-LINE
 OVERVIEW

DATE	PROJ. NUM.	SHEET
NOV, 2019	190086	1 OF 8





- 1 - 6, 0kV, 1 2-7 strand_ehs_steel.wir, Ruling Span 646 (ft), Tension 2685 (lbs) at 60 (deg F) Initial, Displayed 120 Deg F Creep 2254 (lbs)
- 6 - 7, 0kV, 1 2-7 strand_ehs_steel.wir, Ruling Span 81 (ft), Tension 58 (lbs) at 60 (deg F) Initial, Displayed 120 Deg F Creep 57 (lbs)
- 8 - 9, 0kV, 1 2-7 strand_ehs_steel.wir, Ruling Span 103 (ft), Tension 62 (lbs) at 60 (deg F) Initial, Displayed 120 Deg F Creep 62 (lbs)
- 1 - 6, 0kV, 1 2-7 strand_ehs_steel.wir, Ruling Span 643 (ft), Tension 2685 (lbs) at 60 (deg F) Initial, Displayed 120 Deg F Creep 2279 (lbs)
- 1 - 6, 0kV, 1 2-7 strand_ehs_steel.wir, Ruling Span 643 (ft), Tension 2685 (lbs) at 60 (deg F) Initial, Displayed 120 Deg F Creep 2252 (lbs)
- 6 - 7, 0kV, 1 2-7 strand_ehs_steel.wir, Ruling Span 95 (ft), Tension 2685 (lbs) at 60 (deg F) Initial, Displayed 120 Deg F Creep 1389 (lbs)
- 8 - 9, 0kV, 1 2-7 strand_ehs_steel.wir, Ruling Span 73 (ft), Tension 2685 (lbs) at 60 (deg F) Initial, Displayed 120 Deg F Creep 1343 (lbs)
- 9 - 50, 0kV, 1 2-7 strand_ehs_steel.wir, Ruling Span 683 (ft), Tension 2685 (lbs) at 60 (deg F) Initial, Displayed 120 Deg F Creep 2283 (lbs)
- 1 - 6, 230kV, magnolia_aac.wir, Ruling Span 643 (ft), Tension 3814 (lbs) at 60 (deg F) Initial, Displayed 212 Deg F Creep 2076 (lbs)
- 6 - 7, 230kV, magnolia_aac.wir, Ruling Span 100 (ft), Tension 3814 (lbs) at 60 (deg F) Initial, Displayed 212 Deg F Creep 436 (lbs)
- 7 - 8, 230kV, magnolia_aac.wir, Ruling Span 90 (ft), Tension 3814 (lbs) at 60 (deg F) Initial, Displayed 212 Deg F Creep 394 (lbs)
- 8 - 9, 230kV, magnolia_aac.wir, Ruling Span 83 (ft), Tension 3814 (lbs) at 60 (deg F) Initial, Displayed 212 Deg F Creep 366 (lbs)
- 9 - 50, 230kV, magnolia_aac.wir, Ruling Span 683 (ft), Tension 3814 (lbs) at 60 (deg F) Initial, Displayed 212 Deg F Creep 2155 (lbs)
- 1 - 6, 230kV, magnolia_aac.wir, Ruling Span 646 (ft), Tension 3814 (lbs) at 60 (deg F) Initial, Displayed 212 Deg F Creep 2081 (lbs)
- 6 - 7, 230kV, magnolia_aac.wir, Ruling Span 86 (ft), Tension 174 (lbs) at 60 (deg F) Initial, Displayed 212 Deg F Creep 156 (lbs)
- 7 - 8, 230kV, magnolia_aac.wir, Ruling Span 109 (ft), Tension 414 (lbs) at 60 (deg F) Initial, Displayed 212 Deg F Creep 302 (lbs)
- 8 - 9, 230kV, magnolia_aac.wir, Ruling Span 103 (ft), Tension 142 (lbs) at 60 (deg F) Initial, Displayed 212 Deg F Creep 135 (lbs)
- 9 - 50, 230kV, magnolia_aac.wir, Ruling Span 683 (ft), Tension 3763 (lbs) at 60 (deg F) Initial, Displayed 212 Deg F Creep 2147 (lbs)

NOTES:

1. TERRAIN AND AERIAL PHOTOGRAPH ARE PUBLICLY AVAILABLE DATA. FINAL DESIGN WILL BE BASED ON CURRENT TERRAIN AND PLANIMETRIC SURVEY.
2. PROPERTY BOUNDARIES ARE FROM KERN COUNTY DATABASE. FINAL DESIGN WILL BE BASED ON A CURRENT ALTA SURVEY.
3. COORDINATES ARE NAD83, CA SP V.

- LEGEND:**
- CONSTRUCTION ACCESS ROAD ONLY
 - CONSTRUCTION ACCESS ROAD WITH COINCIDENT FIBER-OPTIC CABLE TRENCH
 - FIBER-OPTIC CABLE TRENCH ONLY

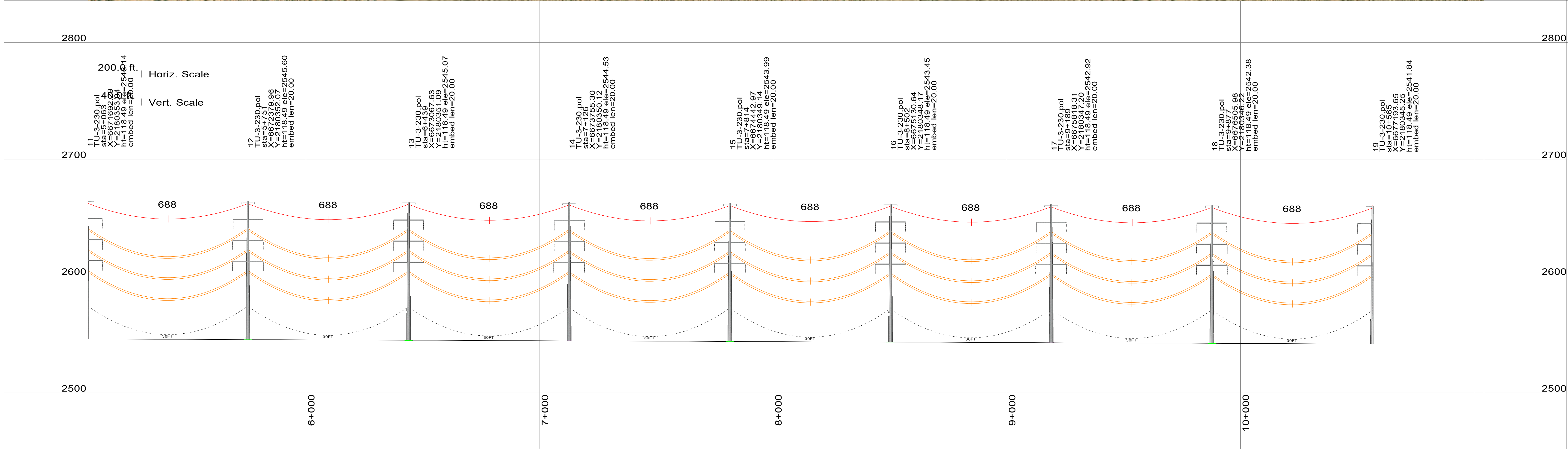
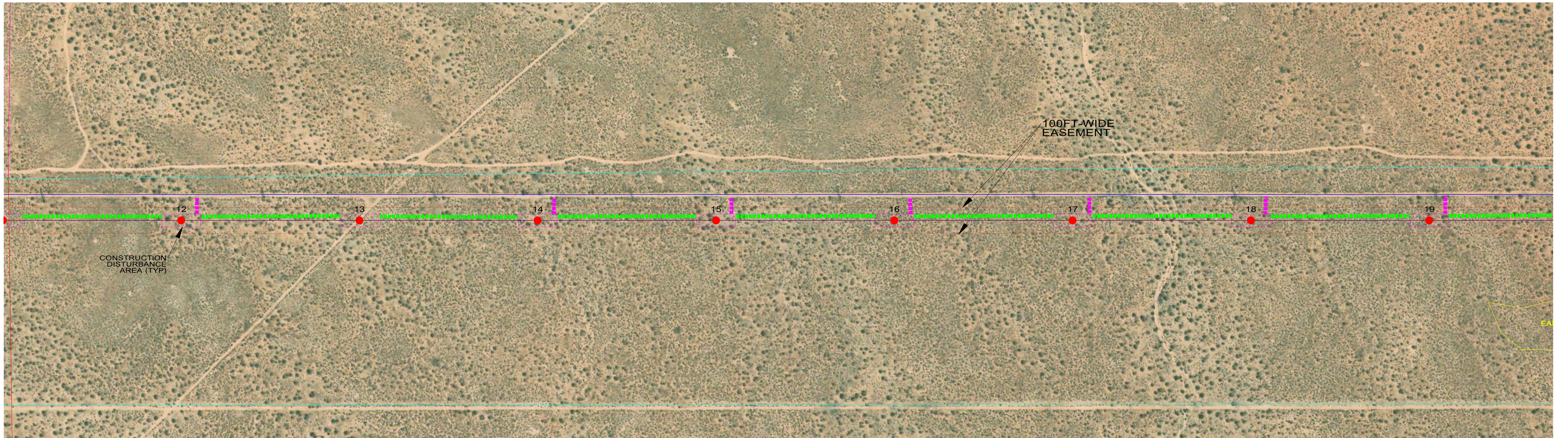
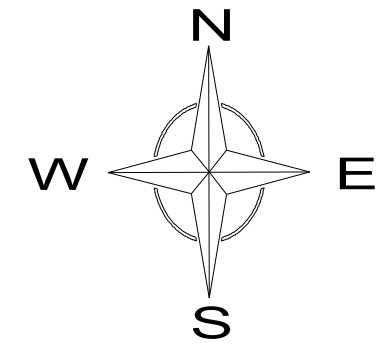


NO.	REVISION	DATE	BY
F	REVISE DISTURBANCE, ADD ESMT.	4/8/21	MDP
E	ADD EST. HEIGHT/DEPTH	4/5/21	MDP
D	ADD FIBER TRENCH DISTURBANCE	7/24/20	MDP
C	ADD DISTURBANCE AREAS	7/14/20	MDP
B	REVISED SUBST LOC	2/11/20	MDP
A	FOR REVIEW	11/20/19	MDP

ARATINA SOLAR PROJECT
8MINUTE SOLAR ENERGY

PRELIMINARY PLAN/PROFILE
230-kV GENERATION TIE-LINE
STRUCTURES 1 TO 11

DATE	PROJ. NUM.	SHEET
NOV, 2019	190086	2 OF 8



9 - 50, 0kV, 1-2-7 strand_ehs_steel.wir, Ruling Span 683 (ft), Tension 2682 (lbs) at 60 (deg F) Initial, Displayed 120 Deg F Creep 2279 (lbs)
 9 - 50, 0kV, 1-2-7 strand_ehs_steel.wir, Ruling Span 683 (ft), Tension 2685 (lbs) at 60 (deg F) Initial, Displayed 120 Deg F Creep 2283 (lbs)
 9 - 50, 230kV, magnolia_aac.wir, Ruling Span 683 (ft), Tension 3814 (lbs) at 60 (deg F) Initial, Displayed 212 Deg F Creep 2155 (lbs)
 9 - 50, 230kV, magnolia_aac.wir, Ruling Span 683 (ft), Tension 3763 (lbs) at 60 (deg F) Initial, Displayed 212 Deg F Creep 2147 (lbs)

NOTES:
 1. TERRAIN AND AERIAL PHOTOGRAPH ARE PUBLICLY AVAILABLE DATA. FINAL DESIGN WILL BE BASED ON CURRENT TERRAIN AND PLANIMETRIC SURVEY.
 2. PROPERTY BOUNDARIES ARE FROM KERN COUNTY DATABASE. FINAL DESIGN WILL BE BASED ON A CURRENT ALTA SURVEY.
 3. COORDINATES ARE NAD83, CA SP V.

LEGEND:
 CONSTRUCTION ACCESS ROAD ONLY
 CONSTRUCTION ACCESS ROAD WITH COINCIDENT FIBER-OPTIC CABLE TRENCH
 FIBER-OPTIC CABLE TRENCH ONLY

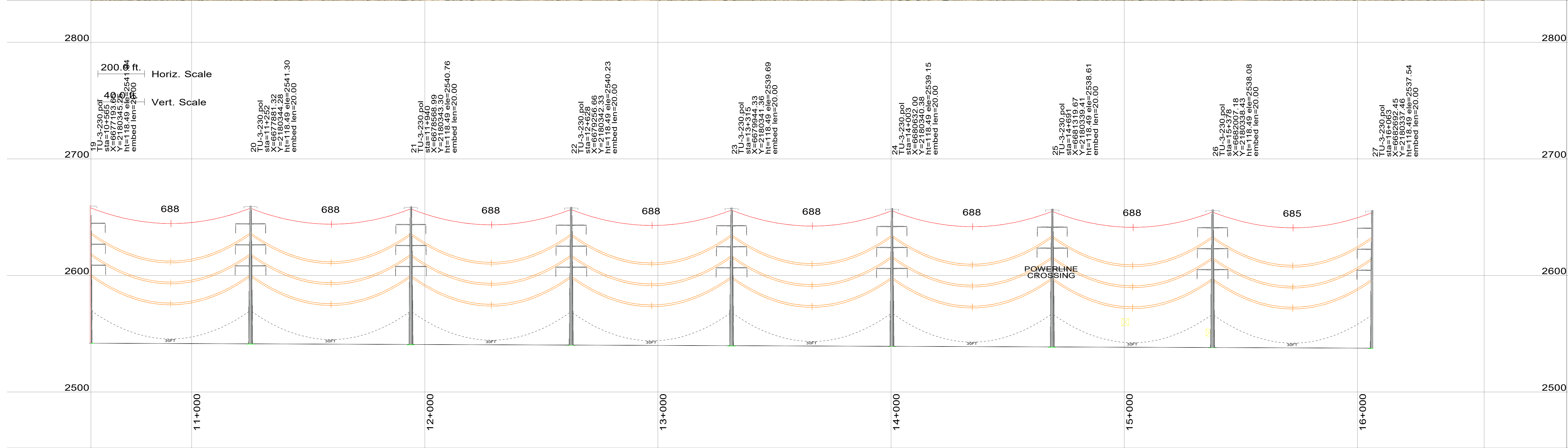
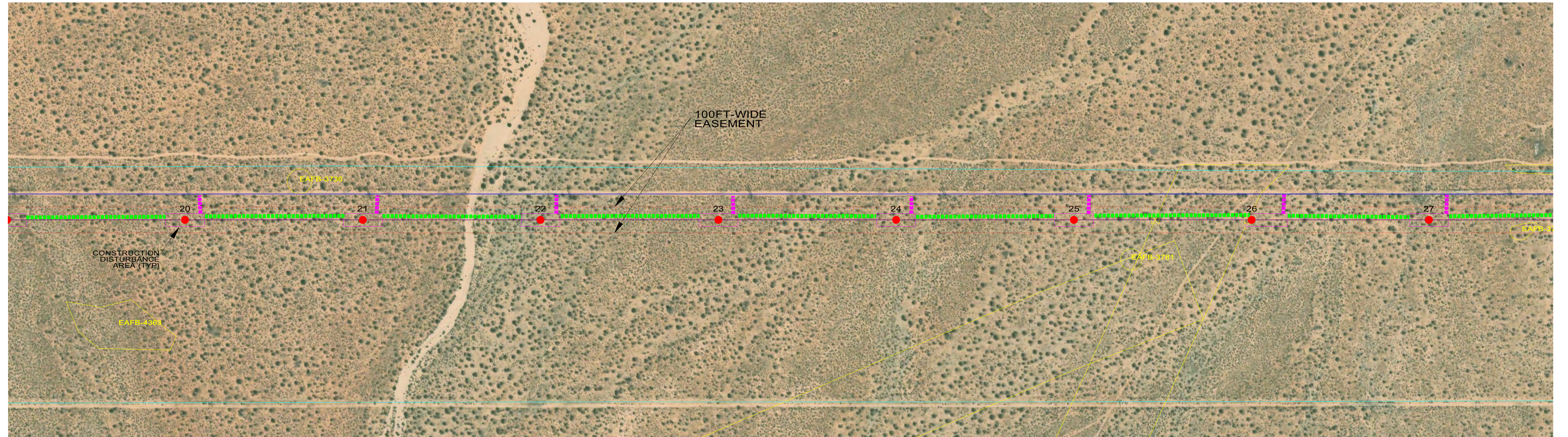
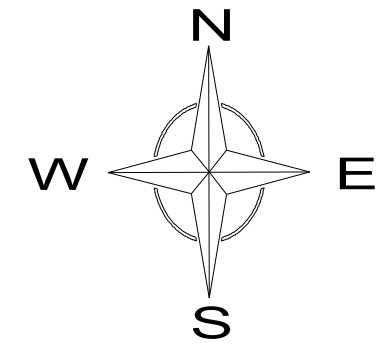


NO.	REVISION	DATE	BY
F	REVISE DISTURBANCE, ADD ESMT.	4/8/21	MDP
E	ADD EST. HEIGHT/DEPTH	4/5/21	MDP
D	ADD FIBER TRENCH DISTURBANCE	7/24/20	MDP
C	ADD DISTURBANCE AREAS	7/14/20	MDP
B	REVISED SUBST LOC	2/11/20	MDP
A	FOR REVIEW	11/20/19	MDP

ARATINA SOLAR PROJECT
 8MINUTE SOLAR ENERGY

**PRELIMINARY PLAN/PROFILE
 230-kV GENERATION TIE-LINE
 STRUCTURES 12 TO 19**

DATE	PROJ. NUM.	SHEET
NOV, 2019	190086	3 OF 8



9 - 50, 0kV, 1-2-7 strand_ehs_steel.wir, Ruling Span 683 (ft), Tension 2682 (lbs) at 60 (deg F) Initial, Displayed 120 Deg F Creep 2279 (lbs)
 9 - 50, 0kV, 1-2-7 strand_ehs_steel.wir, Ruling Span 683 (ft), Tension 2685 (lbs) at 60 (deg F) Initial, Displayed 120 Deg F Creep 2283 (lbs)
 9 - 50, 230kV, magnolia_aac.wir, Ruling Span 683 (ft), Tension 3814 (lbs) at 60 (deg F) Initial, Displayed 212 Deg F Creep 2155 (lbs)
 9 - 50, 230kV, magnolia_aac.wir, Ruling Span 683 (ft), Tension 3763 (lbs) at 60 (deg F) Initial, Displayed 212 Deg F Creep 2147 (lbs)

NOTES:

- TERRAIN AND AERIAL PHOTOGRAPH ARE PUBLICLY AVAILABLE DATA. FINAL DESIGN WILL BE BASED ON CURRENT TERRAIN AND PLANEMETRIC SURVEY.
- PROPERTY BOUNDARIES ARE FROM KERN COUNTY DATABASE. FINAL DESIGN WILL BE BASED ON A CURRENT ALTA SURVEY.
- COORDINATES ARE NAD83, CA SP V.

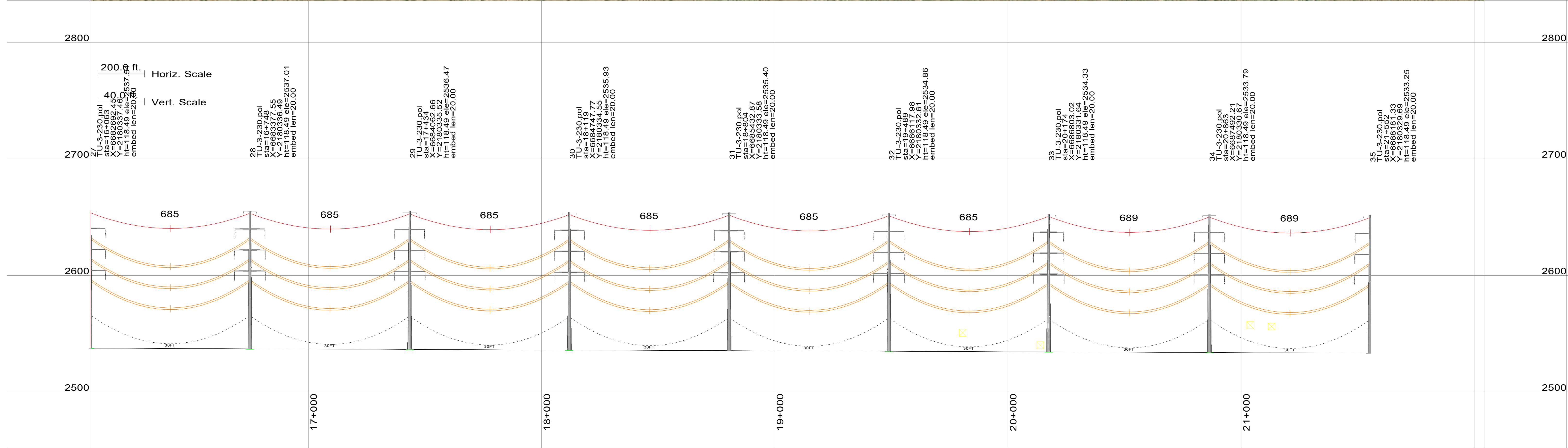
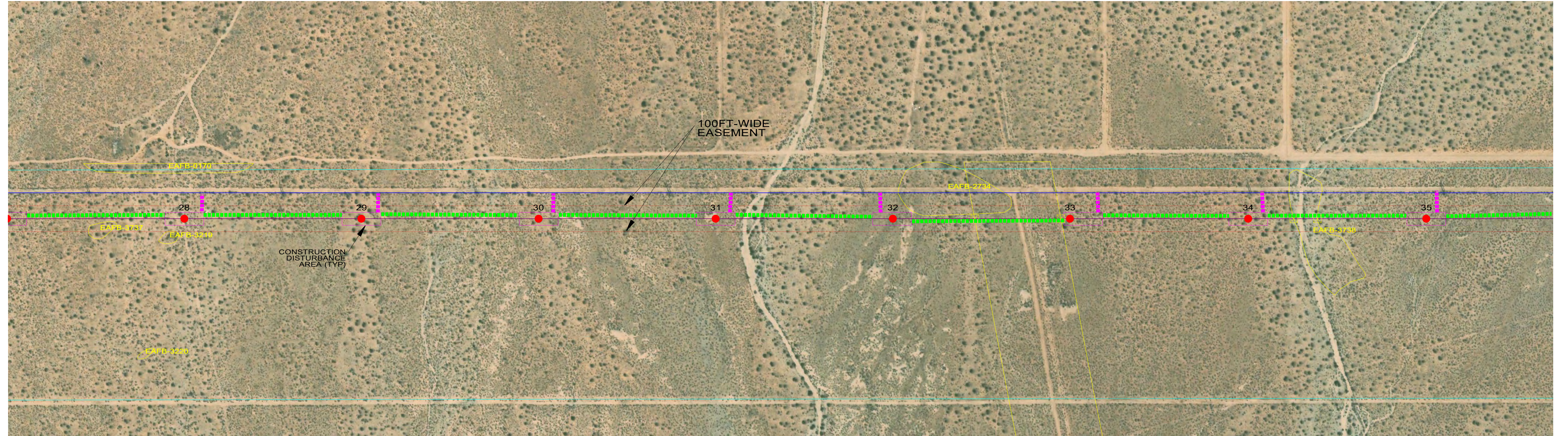
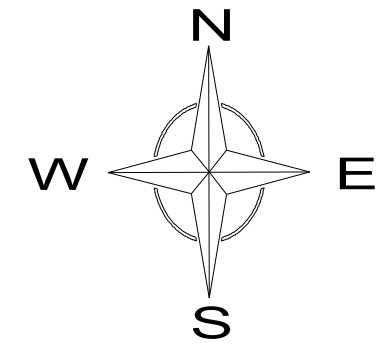
LEGEND:

- CONSTRUCTION ACCESS ROAD ONLY
- CONSTRUCTION ACCESS ROAD WITH COINCIDENT FIBER-OPTIC CABLE TRENCH
- FIBER-OPTIC CABLE TRENCH ONLY



NO.	REVISION	DATE	BY
F	REVISE DISTURBANCE, ADD ESMT.	4/8/21	MDP
E	ADD EST. HEIGHT/DEPTH	4/5/21	MDP
D	ADD FIBER TRENCH DISTURBANCE	7/24/20	MDP
C	ADD DISTURBANCE AREAS	7/14/20	MDP
B	REVISED SUBST LOC	2/11/20	MDP
A	FOR REVIEW	11/20/19	MDP

ARATINA SOLAR PROJECT		
8MINUTE SOLAR ENERGY		
PRELIMINARY PLAN/PROFILE		
230-kV GENERATION TIE-LINE		
STRUCTURES 20 TO 27		
DATE	PROJ. NUM.	SHEET
NOV, 2019	190086	4 OF 8



9 - 50, 0kV, 1-2-7 strand_ahs_steel.wir, Ruling Span 683 (ft), Tension 2682 (lbs) at 60 (deg F) Initial, Displayed 120 Deg F Creep 2279 (lbs)
 9 - 50, 0kV, 1-2-7 strand_ahs_steel.wir, Ruling Span 683 (ft), Tension 2685 (lbs) at 60 (deg F) Initial, Displayed 120 Deg F Creep 2283 (lbs)
 9 - 50, 230kV, magnolia_aac.wir, Ruling Span 683 (ft), Tension 3814 (lbs) at 60 (deg F) Initial, Displayed 212 Deg F Creep 2155 (lbs)
 9 - 50, 230kV, magnolia_aac.wir, Ruling Span 683 (ft), Tension 3763 (lbs) at 60 (deg F) Initial, Displayed 212 Deg F Creep 2147 (lbs)

NOTES:

- TERRAIN AND AERIAL PHOTOGRAPH ARE PUBLICLY AVAILABLE DATA. FINAL DESIGN WILL BE BASED ON CURRENT TERRAIN AND PLANIMETRIC SURVEY.
- PROPERTY BOUNDARIES ARE FROM KERN COUNTY DATABASE. FINAL DESIGN WILL BE BASED ON A CURRENT ALTA SURVEY.
- COORDINATES ARE NAD83, CA SP V.

LEGEND:

- CONSTRUCTION ACCESS ROAD ONLY
- CONSTRUCTION ACCESS ROAD WITH COINCIDENT FIBER-OPTIC CABLE TRENCH
- FIBER-OPTIC CABLE TRENCH ONLY

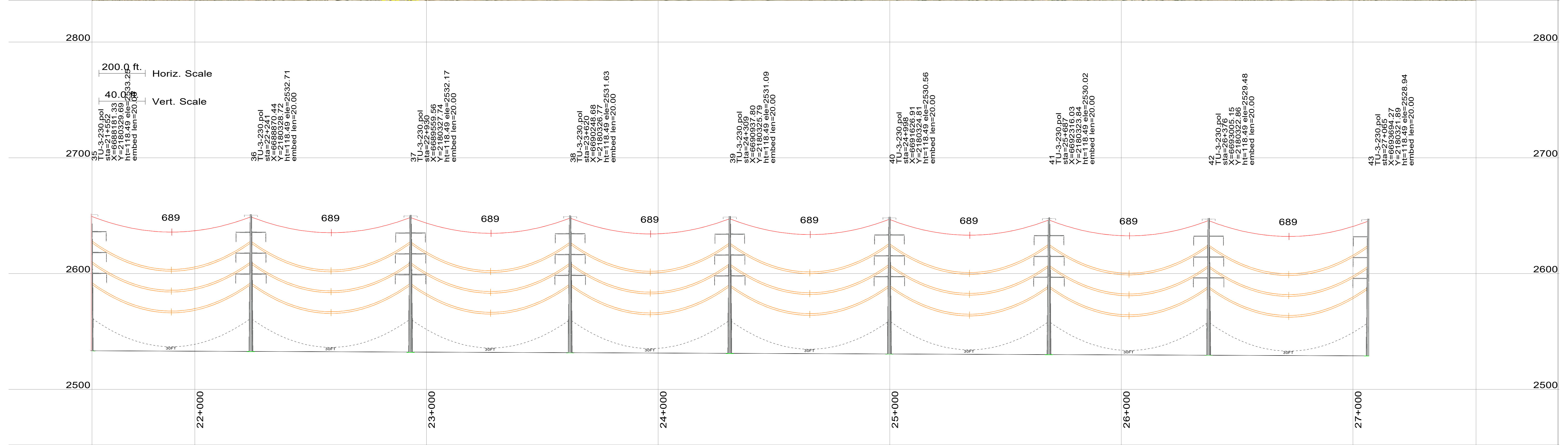
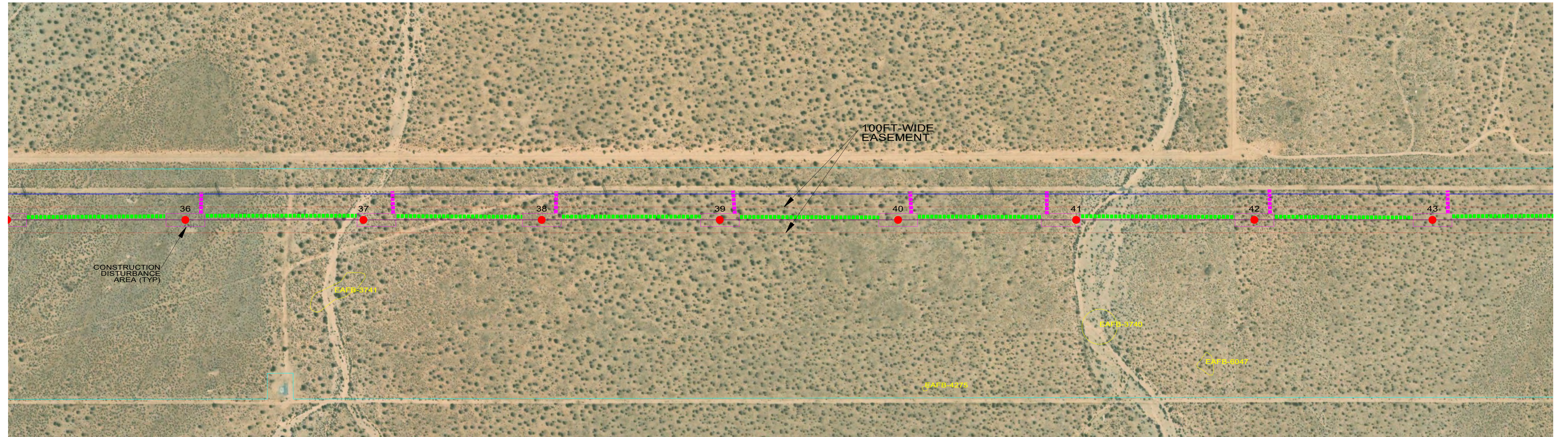
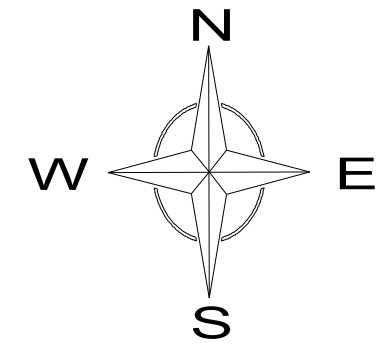


NO.	REVISION	DATE	BY
F	REVISE DISTURBANCE, ADD ESMT.	4/8/21	MDP
E	ADD EST. HEIGHT/DEPTH	4/5/21	MDP
D	ADD FIBER TRENCH DISTURBANCE	7/24/20	MDP
C	ADD DISTURBANCE AREAS	7/14/20	MDP
B	REVISED SUBST LOC	2/11/20	MDP
A	FOR REVIEW	11/20/19	MDP

ARATINA SOLAR PROJECT
8MINUTE SOLAR ENERGY

PRELIMINARY PLAN/PROFILE
230-kV GENERATION TIE-LINE
STRUCTURES 28 TO 35

DATE	PROJ. NUM.	SHEET
NOV, 2019	190086	5 OF 8



9 - 50, 0kV, 1-2-7 strand_ehs_steel.wir, Ruling Span 683 (ft), Tension 2682 (lbs) at 60 (deg F) Initial, Displayed 120 Deg F Creep 2279 (lbs)
 9 - 50, 0kV, 1-2-7 strand_ehs_steel.wir, Ruling Span 683 (ft), Tension 2685 (lbs) at 60 (deg F) Initial, Displayed 120 Deg F Creep 2283 (lbs)
 9 - 50, 230kV, magnolia_aac.wir, Ruling Span 683 (ft), Tension 3814 (lbs) at 60 (deg F) Initial, Displayed 212 Deg F Creep 2155 (lbs)
 9 - 50, 230kV, magnolia_aac.wir, Ruling Span 683 (ft), Tension 3763 (lbs) at 60 (deg F) Initial, Displayed 212 Deg F Creep 2147 (lbs)

NOTES:

- TERRAIN AND AERIAL PHOTOGRAPH ARE PUBLICLY AVAILABLE DATA. FINAL DESIGN WILL BE BASED ON CURRENT TERRAIN AND PLANIMETRIC SURVEY.
- PROPERTY BOUNDARIES ARE FROM KERN COUNTY DATABASE. FINAL DESIGN WILL BE BASED ON A CURRENT ALTA SURVEY.
- COORDINATES ARE NAD83, CA SP V.

LEGEND:

- CONSTRUCTION ACCESS ROAD ONLY
- CONSTRUCTION ACCESS ROAD WITH COINCIDENT FIBER-OPTIC CABLE TRENCH
- FIBER-OPTIC CABLE TRENCH ONLY

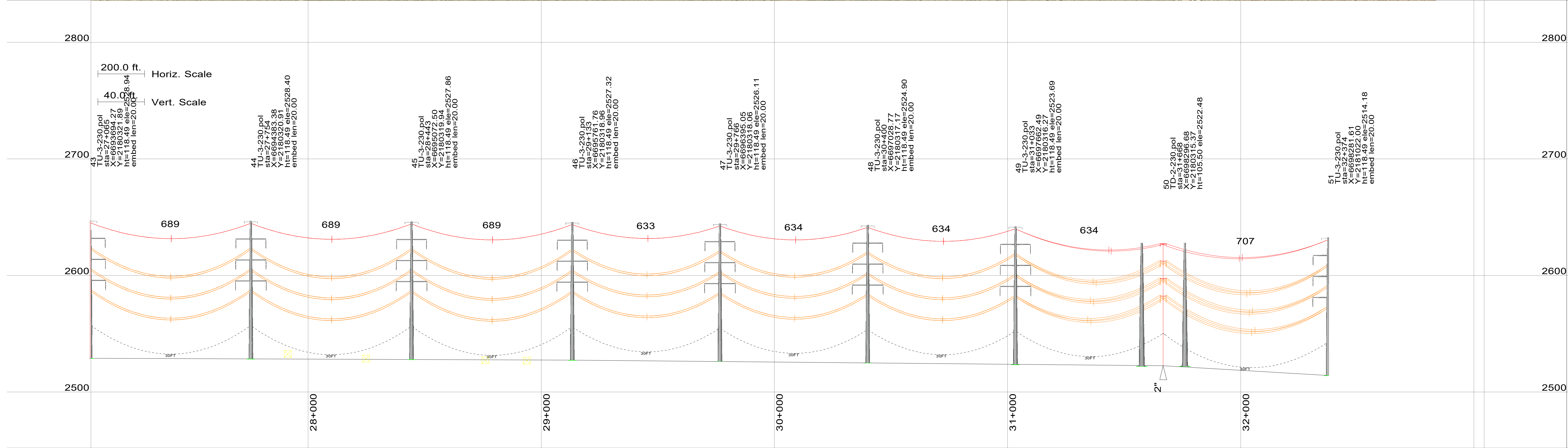
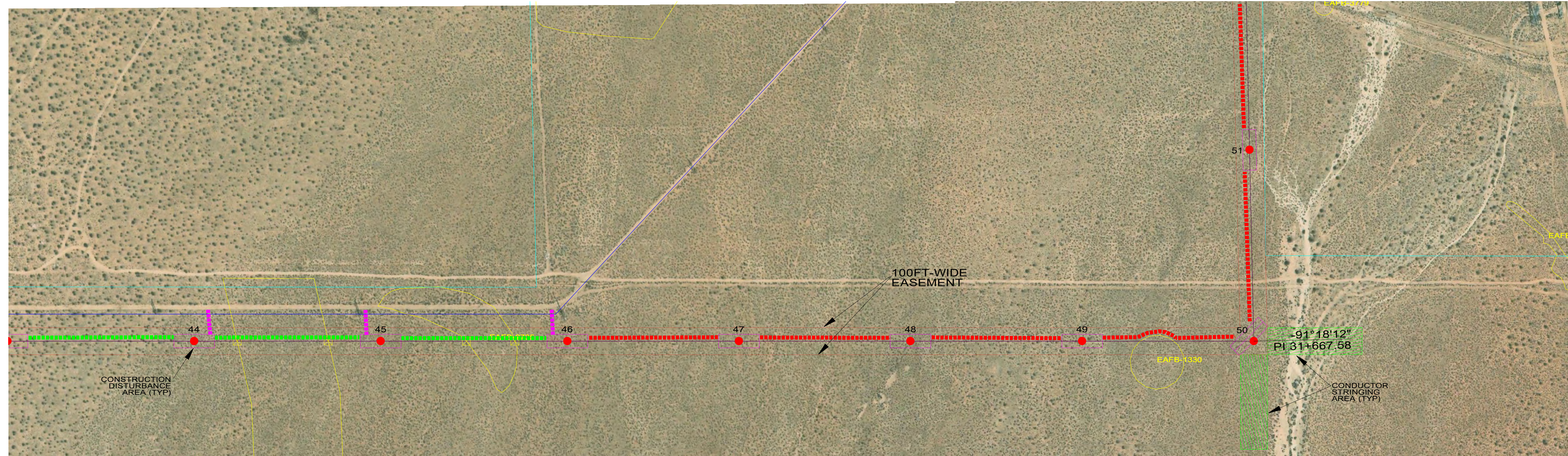
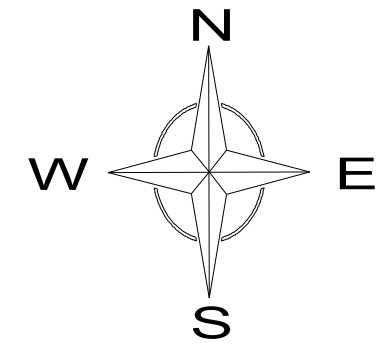


NO.	REVISION	DATE	BY
F	REVISE DISTURBANCE, ADD ESMT.	4/8/21	MDP
E	ADD EST. HEIGHT/DEPTH	4/5/21	MDP
D	ADD FIBER TRENCH DISTURBANCE	7/24/20	MDP
C	ADD DISTURBANCE AREAS	7/14/20	MDP
B	REVISED SUBST LOC	2/11/20	MDP
A	FOR REVIEW	11/20/19	MDP

ARATINA SOLAR PROJECT
8MINUTE SOLAR ENERGY

PRELIMINARY PLAN/PROFILE
230-KV GENERATION TIE-LINE
STRUCTURES 36 TO 43

DATE	PROJ. NUM.	SHEET
NOV, 2019	190086	6 OF 8



9 - 50, 0kV, 1 2-7 strand_ehs_steel.wir, Ruling Span 683 (ft), Tension 2682 (lbs) at 60 (deg F) Initial, Displayed 120 Deg F Creep 2279 (lbs)
 50 - 53, 0kV, 1 2-7 strand_ehs_steel.wir, Ruling Span 707 (ft), Tension 2682 (lbs) at 60 (deg F) Initial, Displayed 120 Deg F Creep 2298 (lbs)
 9 - 50, 0kV, 1 2-7 strand_ehs_steel.wir, Ruling Span 683 (ft), Tension 2685 (lbs) at 60 (deg F) Initial, Displayed 120 Deg F Creep 2283 (lbs)
 50 - 53, 0kV, 1 2-7 strand_ehs_steel.wir, Ruling Span 706 (ft), Tension 2685 (lbs) at 60 (deg F) Initial, Displayed 120 Deg F Creep 2299 (lbs)
 9 - 50, 230kV, magnolia_aac.wir, Ruling Span 683 (ft), Tension 3814 (lbs) at 60 (deg F) Initial, Displayed 212 Deg F Creep 2155 (lbs)
 50 - 53, 230kV, magnolia_aac.wir, Ruling Span 706 (ft), Tension 3814 (lbs) at 60 (deg F) Initial, Displayed 212 Deg F Creep 2200 (lbs)
 9 - 50, 230kV, magnolia_aac.wir, Ruling Span 683 (ft), Tension 3763 (lbs) at 60 (deg F) Initial, Displayed 212 Deg F Creep 2147 (lbs)
 50 - 53, 230kV, magnolia_aac.wir, Ruling Span 707 (ft), Tension 3763 (lbs) at 60 (deg F) Initial, Displayed 212 Deg F Creep 2193 (lbs)

NOTES:

- TERRAIN AND AERIAL PHOTOGRAPH ARE PUBLICLY AVAILABLE DATA. FINAL DESIGN WILL BE BASED ON CURRENT TERRAIN AND PLANIMETRIC SURVEY.
- PROPERTY BOUNDARIES ARE FROM KERN COUNTY DATABASE. FINAL DESIGN WILL BE BASED ON A CURRENT ALTA SURVEY.
- COORDINATES ARE NAD83, CA SP V.

LEGEND:

- CONSTRUCTION ACCESS ROAD ONLY
- CONSTRUCTION ACCESS ROAD WITH COINCIDENT FIBER-OPTIC CABLE TRENCH
- FIBER-OPTIC CABLE TRENCH ONLY

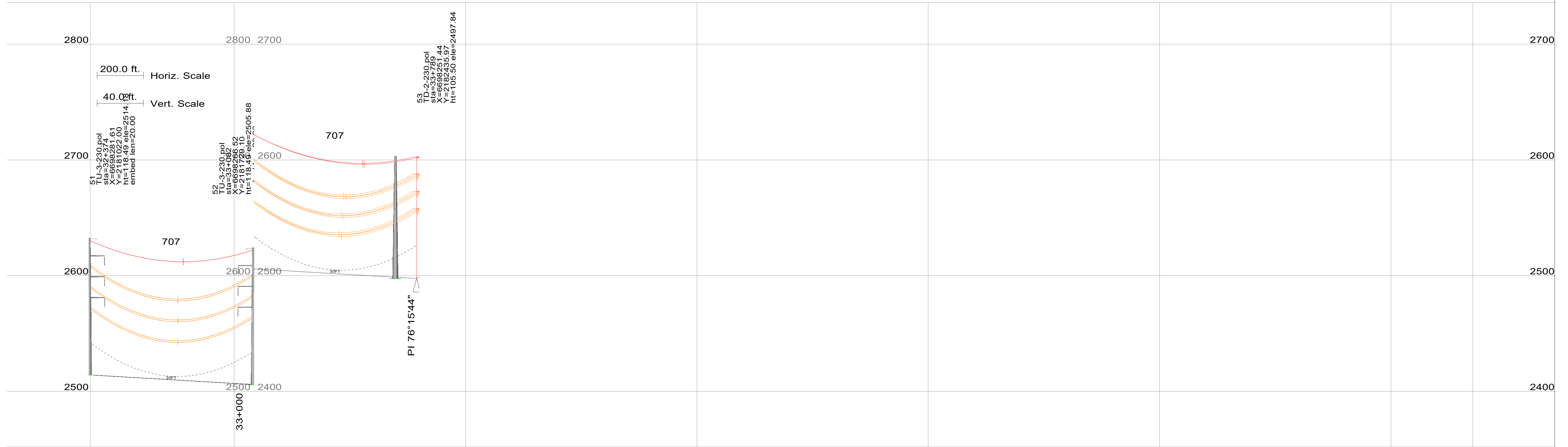
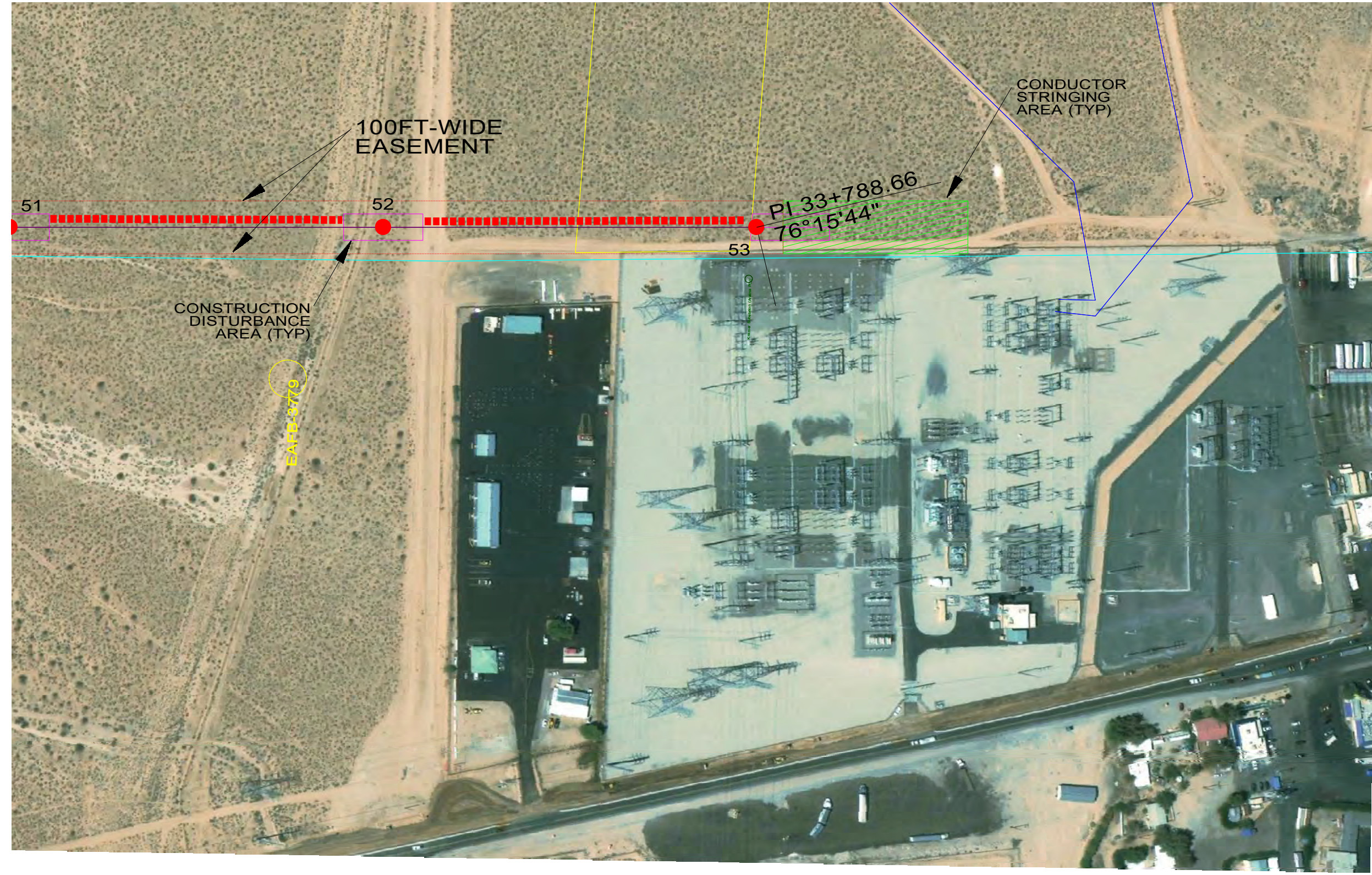
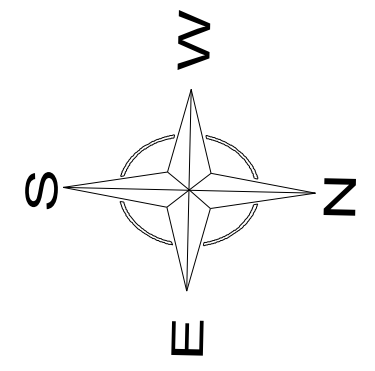


NO.	REVISION	DATE	BY
F	REVISE DISTURBANCE, ADD ESMT.	4/8/21	MDP
E	ADD EST. HEIGHT/DEPTH	4/5/21	MDP
D	ADD FIBER TRENCH DISTURBANCE	7/24/20	MDP
C	ADD DISTURBANCE AREAS	7/14/20	MDP
B	REVISED SUBST LOC	2/11/20	MDP
A	FOR REVIEW	11/20/19	MDP

ARATINA SOLAR PROJECT
 8MINUTE SOLAR ENERGY

PRELIMINARY PLAN/PROFILE
 230-kV GENERATION TIE-LINE
 STRUCTURES 44 TO 51

DATE	PROJ. NUM.	SHEET
NOV, 2019	190086	7 OF 8



50 - 53, 0kV, 1-2-7_strand_ehs_steel.wir, Ruling Span 707 (ft), Tension 2682 (lbs) at 60 (deg F) Initial, Displayed 120 Deg F Creep 2298 (lbs)
 50 - 53, 0kV, 1-2-7_strand_ehs_steel.wir, Ruling Span 706 (ft), Tension 2685 (lbs) at 60 (deg F) Initial, Displayed 120 Deg F Creep 2299 (lbs)
 50 - 53, 230kV, magnolia_aac.wir, Ruling Span 706 (ft), Tension 3814 (lbs) at 60 (deg F) Initial, Displayed 212 Deg F Creep 2200 (lbs)
 50 - 53, 230kV, magnolia_aac.wir, Ruling Span 707 (ft), Tension 3763 (lbs) at 60 (deg F) Initial, Displayed 212 Deg F Creep 2193 (lbs)

NOTES:

1. TERRAIN AND AERIAL PHOTOGRAPH ARE PUBLICLY AVAILABLE DATA. FINAL DESIGN WILL BE BASED ON CURRENT TERRAIN AND PLANIMETRIC SURVEY.
2. PROPERTY BOUNDARIES ARE FROM KERN COUNTY DATABASE. FINAL DESIGN WILL BE BASED ON A CURRENT ALTA SURVEY.
3. COORDINATES ARE NAD83, CA SP V.

LEGEND:

- CONSTRUCTION ACCESS ROAD ONLY
- CONSTRUCTION ACCESS ROAD WITH COINCIDENT FIBER-OPTIC CABLE TRENCH
- FIBER-OPTIC CABLE TRENCH ONLY



NO.	REVISION	DATE	BY
F	REVISE DISTURBANCE, ADD ESMT.	4/8/21	MDP
E	ADD EST. HEIGHT/DEPTH	4/5/21	MDP
D	ADD FIBER TRENCH DISTURBANCE	7/24/20	MDP
C	ADD DISTURBANCE AREAS	7/14/20	MDP
B	REVISED SUBST LOC	2/11/20	MDP
A	FOR REVIEW	11/20/19	MDP

ARATINA SOLAR PROJECT
8MINUTE SOLAR ENERGY

PRELIMINARY PLAN/PROFILE
230-kV GENERATION TIE-LINE
STRUCTURES 52 TO 53

DATE	PROJ. NUM.	SHEET
NOV, 2019	190086	8 OF 8

Gen-Tie Line Construction Equipment and Construction Workforce

Equipment Type	Quantity	Personnel
Access/Spur Road Construction		
Bulldozer	1	2: Driver + Spotter
Grader	1	2: Driver + Spotter
Compactor	1	2: Driver + Spotter
Foundation Installation		
Drilling Rig	1	3: Driver + Operator + Support
Crane	1	3: Driver + Operator + Support
Boom Truck	1	1: Operator
Flat Bed Truck	1	1: Operator
Crew Truck(s)	6	6: Crew
Concrete Truck	1	1: Driver/Operator
Pole Erection		
Bucket Lift Truck	1	2: Driver + Operator
Boom Truck(s)	1	3: Driver + Operator + Support
Crew Truck(s)	6	6: Linemen/Groundmen
Cable Pulling		
Heavy-duty Truck (Puller)	1	2: Driver + Operator
Heavy-duty Truck (Tensioner)	1	2: Driver + Operator
Crew Truck(s)	6	6: Linemen/Groundmen
Crew Truck(s)	6	3: Spotters
Helicopter	1	2: Pilot + Spotter

Appendix B. Preliminary Plan and Profile – Single Circuit

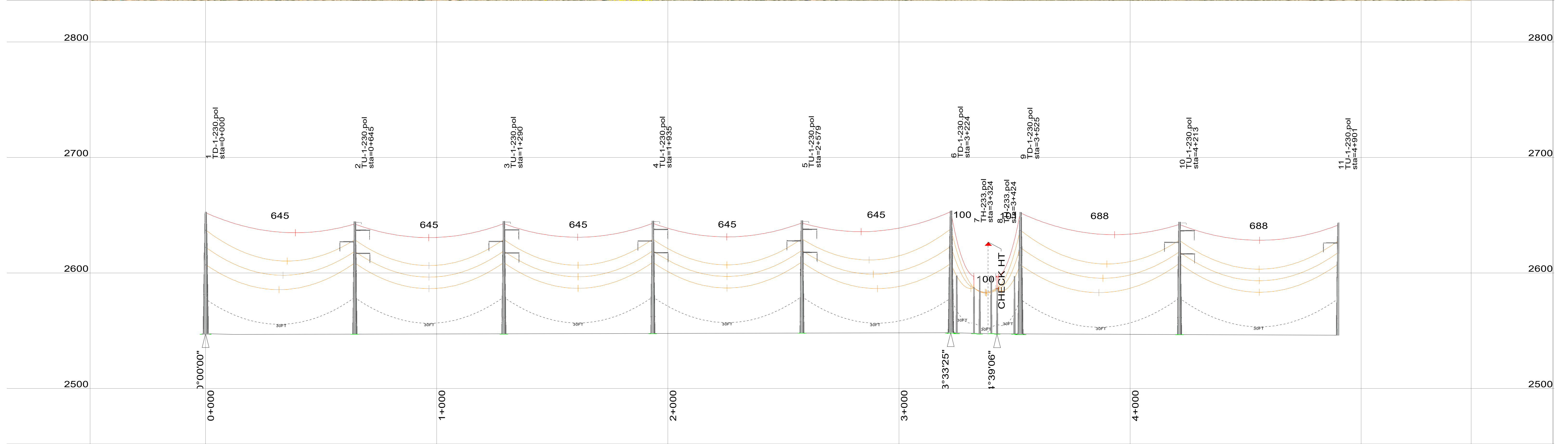
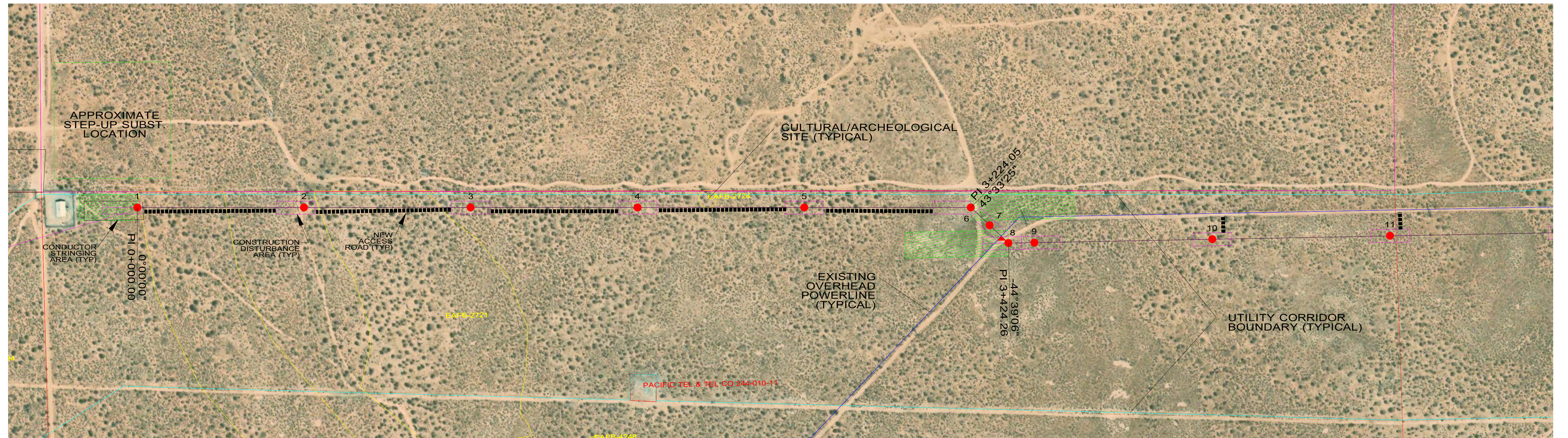
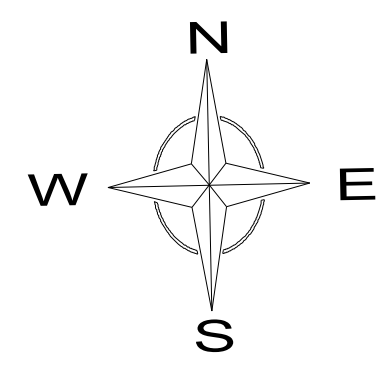
Enclosed is a series of plates that outline the plan for a single circuit.



© 2019 Microsoft Corporation © 2019 DigitalGlobe © CNES (2019) Distribution Airbus DS © 2019 HERE

C	ADD DISTURBANCE AREAS	7/14/20	MDP
B	REVISED SUBST LOC	2/11/20	MDP
A	FOR REVIEW	11/20/19	MDP
NO.	REVISION	DATE	BY
ARATINA SOLAR PROJECT			
8MINUTE SOLAR ENERGY PRELIMINARY PLAN/PROFILE 230-kV GENERATION TIE-LINE OVERVIEW			
DATE	PROJ. NUM.	SHEET	
NOV, 2019	190086	1 OF 8	





- 1 - 6, 0kV, 1-2-7 strand_ehs_steel.wir, Ruling Span 644 (ft), Tension 2685 (lbs) at 60 (deg F) Initial, Displayed 120 Deg F Creep 2253 (lbs)
- 6 - 7, 0kV, 1-2-7 strand_ehs_steel.wir, Ruling Span 87 (ft), Tension 58 (lbs) at 60 (deg F) Initial, Displayed 120 Deg F Creep 58 (lbs)
- 8 - 9, 0kV, 1-2-7 strand_ehs_steel.wir, Ruling Span 82 (ft), Tension 62 (lbs) at 60 (deg F) Initial, Displayed 120 Deg F Creep 61 (lbs)
- 9 - 50, 0kV, 1-2-7 strand_ehs_steel.wir, Ruling Span 683 (ft), Tension 2682 (lbs) at 60 (deg F) Initial, Displayed 120 Deg F Creep 2279 (lbs)
- 1 - 6, 230kV, magnolia_aac.wir, Ruling Span 644 (ft), Tension 3814 (lbs) at 60 (deg F) Initial, Displayed 212 Deg F Creep 2078 (lbs)
- 6 - 7, 230kV, magnolia_aac.wir, Ruling Span 92 (ft), Tension 174 (lbs) at 60 (deg F) Initial, Displayed 212 Deg F Creep 158 (lbs)
- 7 - 8, 230kV, magnolia_aac.wir, Ruling Span 99 (ft), Tension 414 (lbs) at 60 (deg F) Initial, Displayed 212 Deg F Creep 290 (lbs)
- 8 - 9, 230kV, magnolia_aac.wir, Ruling Span 93 (ft), Tension 142 (lbs) at 60 (deg F) Initial, Displayed 212 Deg F Creep 132 (lbs)
- 9 - 50, 230kV, magnolia_aac.wir, Ruling Span 683 (ft), Tension 3763 (lbs) at 60 (deg F) Initial, Displayed 212 Deg F Creep 2146 (lbs)

NOTES:
 1. TERRAIN AND AERIAL PHOTOGRAPH ARE PUBLICLY AVAILABLE DATA. FINAL DESIGN WILL BE BASED ON CURRENT TERRAIN AND PLANIMETRIC SURVEY.
 2. PROPERTY BOUNDARIES ARE FROM KERN COUNTY DATABASE. FINAL DESIGN WILL BE BASED ON A CURRENT ALTA SURVEY.

200.0 ft. Horiz. Scale
 40.0 ft. Vert. Scale

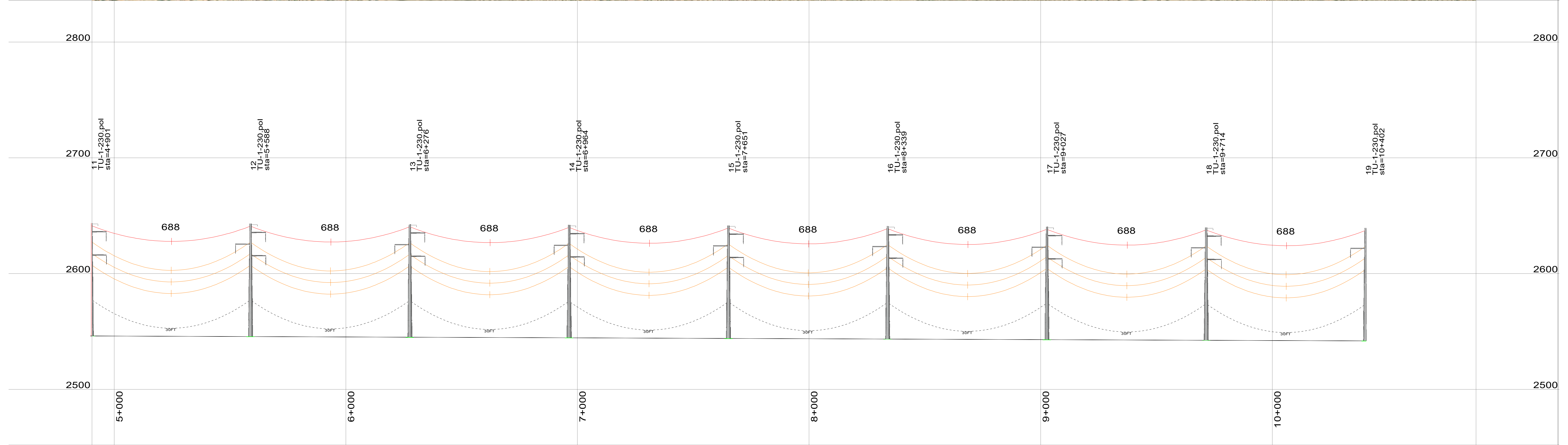
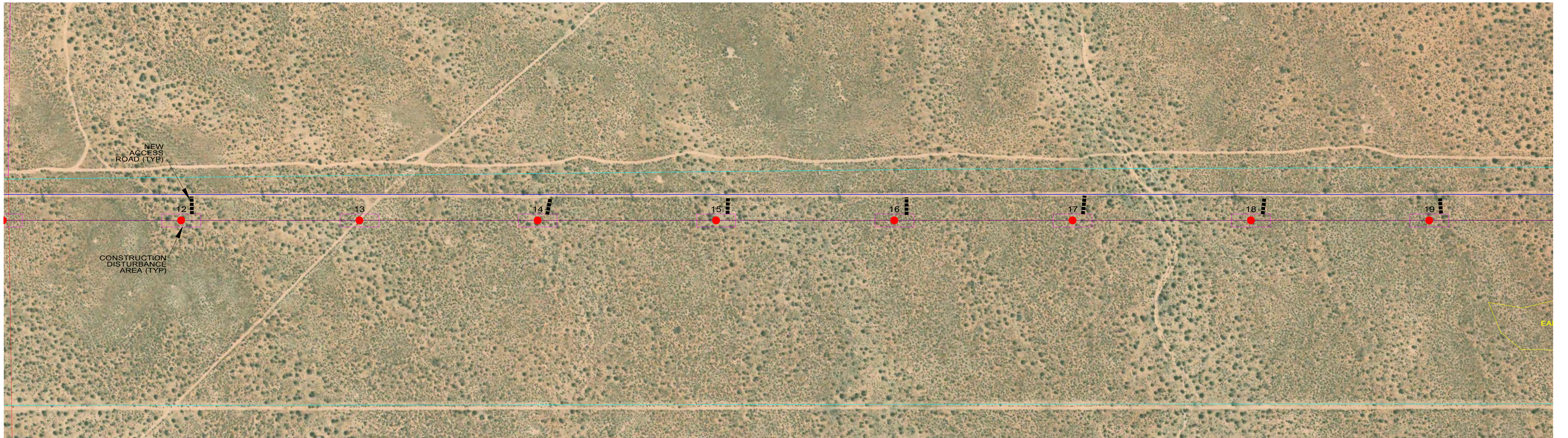
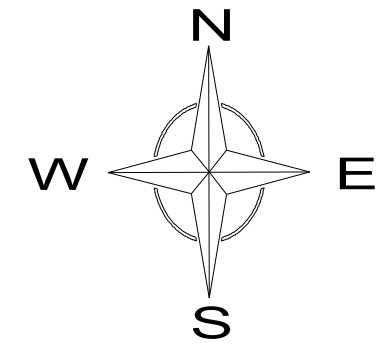


C	ADD DISTURBANCE AREAS	7/14/20	MDP
B	REVISED SUBST LOC	2/11/20	MDP
A	FOR REVIEW	11/20/19	MDP
NO.	REVISION	DATE	BY

ARATINA SOLAR PROJECT
 8MINUTE SOLAR ENERGY

PRELIMINARY PLAN/PROFILE
230-kV GENERATION TIE-LINE
STRUCTURES 1 TO 11

DATE	PROJ. NUM.	SHEET
NOV, 2019	190086	2 OF 8



9 - 50, 0kV, 1_2-7_strand_ehs_steel.wir, Ruling Span 683 (ft), Tension 2682 (lbs) at 60 (deg F) Initial, Displayed 120 Deg F Creep 2279 (lbs)
 9 - 50, 230kV, magnolia_aac.wir, Ruling Span 683 (ft), Tension 3763 (lbs) at 60 (deg F) Initial, Displayed 212 Deg F Creep 2146 (lbs)

NOTES:

1. TERRAIN AND AERIAL PHOTOGRAPH ARE PUBLICLY AVAILABLE DATA. FINAL DESIGN WILL BE BASED ON CURRENT TERRAIN AND PLANEMETRIC SURVEY.
2. PROPERTY BOUNDARIES ARE FROM KERN COUNTY DATABASE. FINAL DESIGN WILL BE BASED ON A CURRENT ALTA SURVEY.

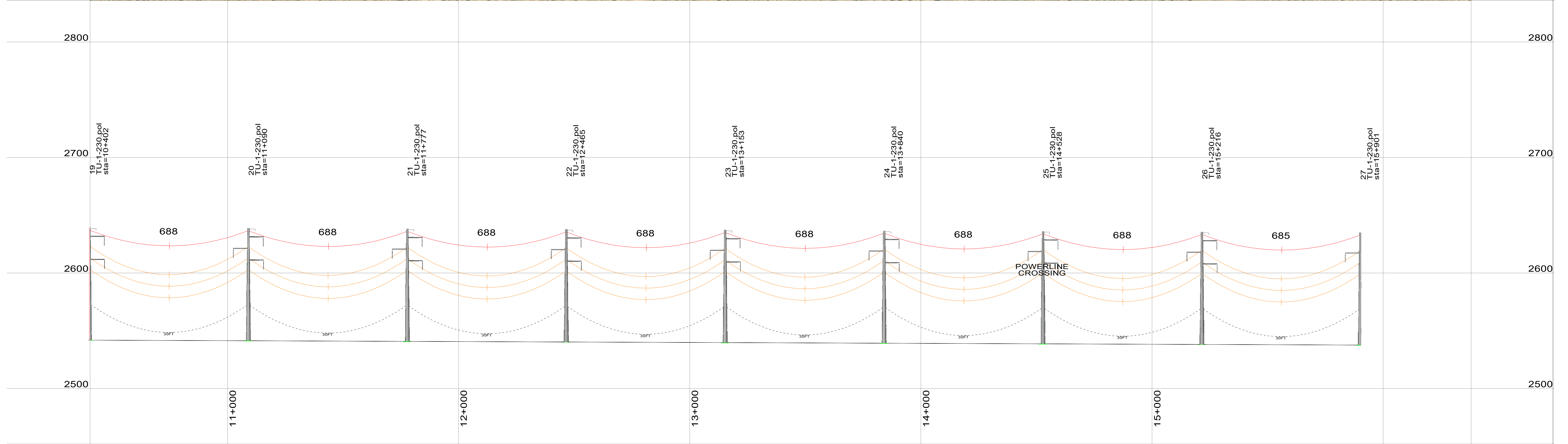
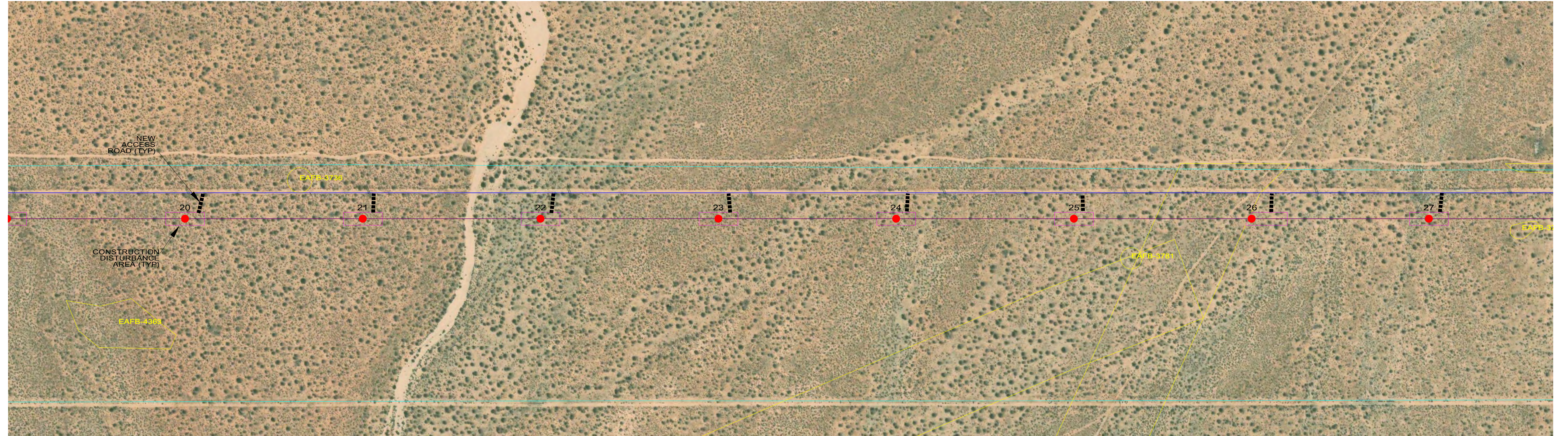
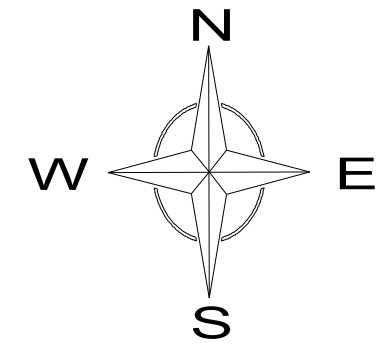
200.0 ft. Horiz. Scale
 40.0 ft. Vert. Scale



NO.	REVISION	DATE	BY
C	ADD DISTURBANCE AREAS	7/14/20	MDP
B	REVISED SUBST LOC	2/11/20	MDP
A	FOR REVIEW	11/20/19	MDP

ARATINA SOLAR PROJECT
 8MINUTE SOLAR ENERGY
PRELIMINARY PLAN/PROFILE
230-kV GENERATION TIE-LINE
STRUCTURES 12 TO 19

DATE	PROJ. NUM.	SHEET
NOV, 2019	190086	3 OF 8



9 - 50, 0kV, 1-2-7_strand_ehs_steel.wir, Ruling Span 683 (ft), Tension 2682 (lbs) at 60 (deg F) Initial, Displayed 120 Deg F Creep 2279 (lbs)
 9 - 50, 230kV, magnolia_aac.wir, Ruling Span 683 (ft), Tension 3763 (lbs) at 60 (deg F) Initial, Displayed 212 Deg F Creep 2146 (lbs)

NOTES:

1. TERRAIN AND AERIAL PHOTOGRAPH ARE PUBLICLY AVAILABLE DATA. FINAL DESIGN WILL BE BASED ON CURRENT TERRAIN AND PLANIMETRIC SURVEY.
2. PROPERTY BOUNDARIES ARE FROM KERN COUNTY DATABASE. FINAL DESIGN WILL BE BASED ON A CURRENT ALTA SURVEY.

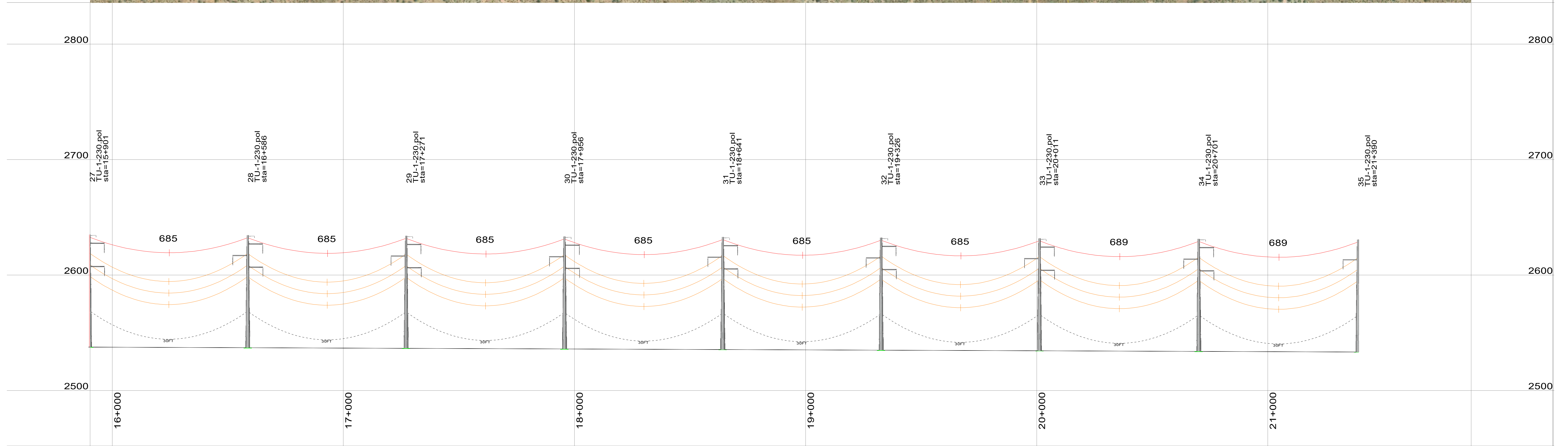
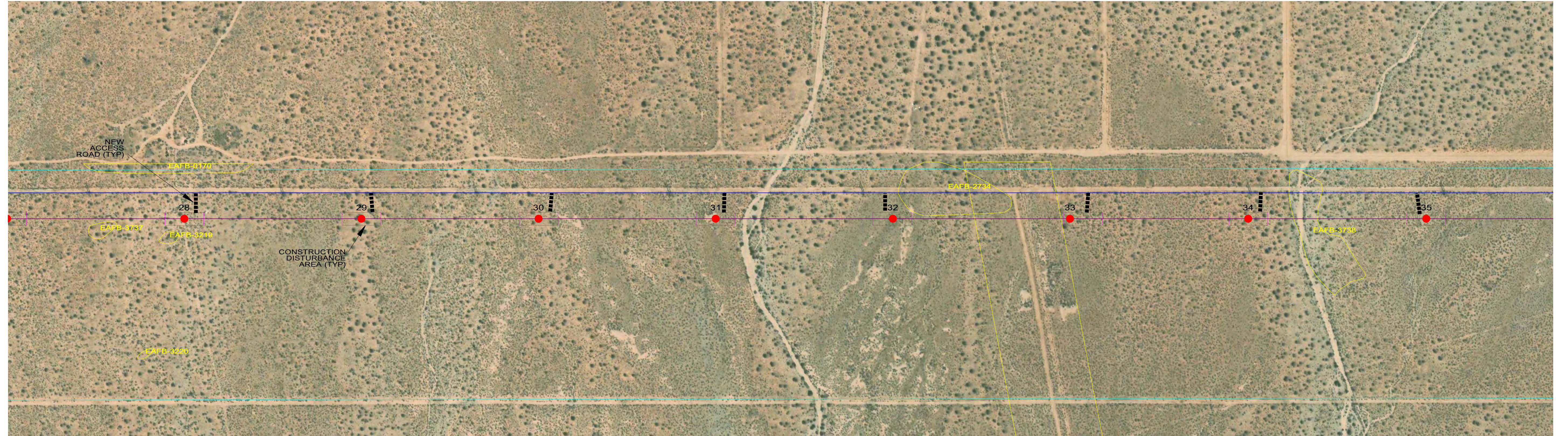
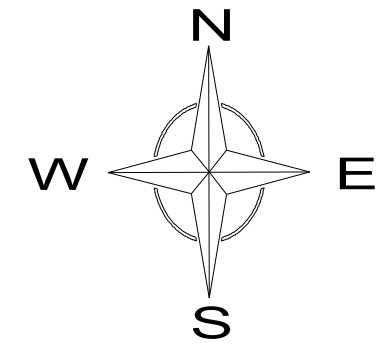
200.0 ft. Horiz. Scale
 40.0 ft. Vert. Scale



NO.	REVISION	DATE	BY
C	ADD DISTURBANCE AREAS	7/14/20	MDP
B	REVISED SUBST LOC	2/11/20	MDP
A	FOR REVIEW	11/20/19	MDP

ARATINA SOLAR PROJECT
 8MINUTE SOLAR ENERGY
PRELIMINARY PLAN/PROFILE
230-kV GENERATION TIE-LINE
STRUCTURES 20 TO 27

DATE	PROJ. NUM.	SHEET
NOV, 2019	190086	4 OF 8



9 - 50, 0kV, 1-2-7_strand_ehs_steel.wir, Ruling Span 683 (ft), Tension 2682 (lbs) at 60 (deg F) Initial, Displayed 120 Deg F Creep 2279 (lbs)
 9 - 50, 230kV, magnolia_aac.wir, Ruling Span 683 (ft), Tension 3763 (lbs) at 60 (deg F) Initial, Displayed 212 Deg F Creep 2146 (lbs)

NOTES:

1. TERRAIN AND AERIAL PHOTOGRAPH ARE PUBLICLY AVAILABLE DATA. FINAL DESIGN WILL BE BASED ON CURRENT TERRAIN AND PLANIMETRIC SURVEY.
2. PROPERTY BOUNDARIES ARE FROM KERN COUNTY DATABASE. FINAL DESIGN WILL BE BASED ON A CURRENT ALTA SURVEY.

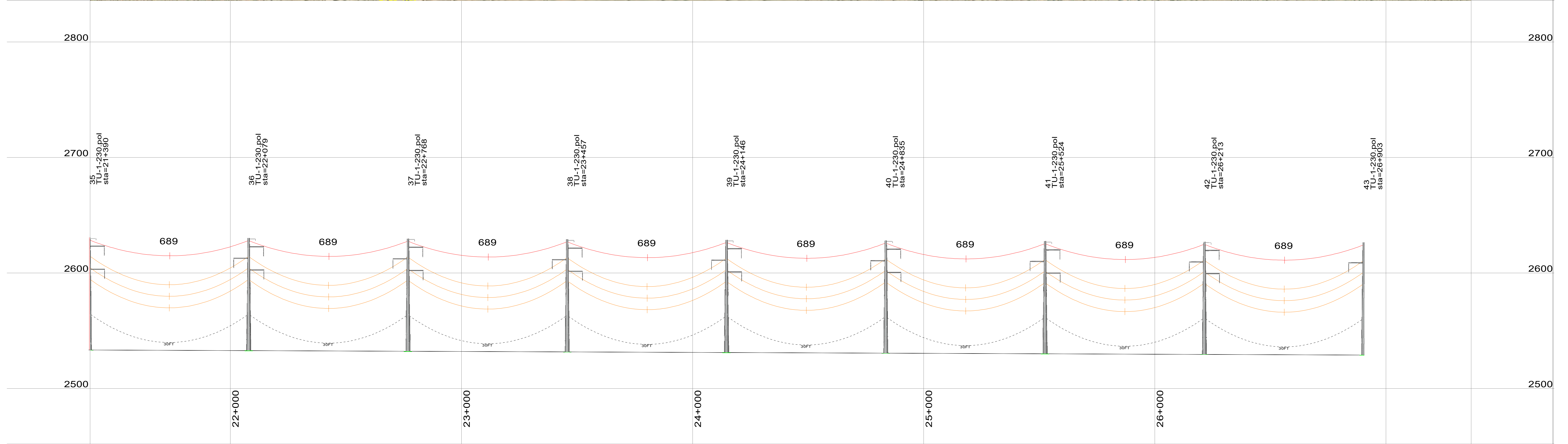
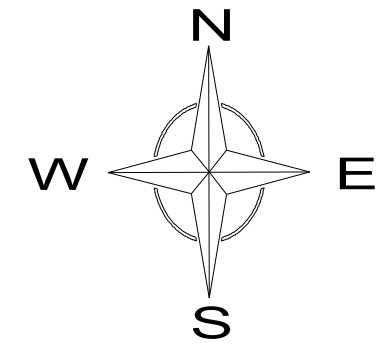
200.0 ft. Horiz. Scale
 40.0 ft. Vert. Scale



NO.	REVISION	DATE	BY
C	ADD DISTURBANCE AREAS	7/14/20	MDP
B	REVISED SUBST LOC	2/11/20	MDP
A	FOR REVIEW	11/20/19	MDP

ARATINA SOLAR PROJECT
 8MINUTE SOLAR ENERGY
PRELIMINARY PLAN/PROFILE
230-kV GENERATION TIE-LINE
STRUCTURES 28 TO 35

DATE	PROJ. NUM.	SHEET
NOV, 2019	190086	5 OF 8



9 - 50, 0kV, 1-2-7_strand_ehs_steel.wir, Ruling Span 683 (ft), Tension 2682 (lbs) at 60 (deg F) Initial, Displayed 120 Deg F Creep 2279 (lbs)
 9 - 50, 230kV, magnolia_aac.wir, Ruling Span 683 (ft), Tension 3763 (lbs) at 60 (deg F) Initial, Displayed 212 Deg F Creep 2146 (lbs)

NOTES:

1. TERRAIN AND AERIAL PHOTOGRAPH ARE PUBLICLY AVAILABLE DATA. FINAL DESIGN WILL BE BASED ON CURRENT TERRAIN AND PLANIMETRIC SURVEY.
2. PROPERTY BOUNDARIES ARE FROM KERN COUNTY DATABASE. FINAL DESIGN WILL BE BASED ON A CURRENT ALTA SURVEY.

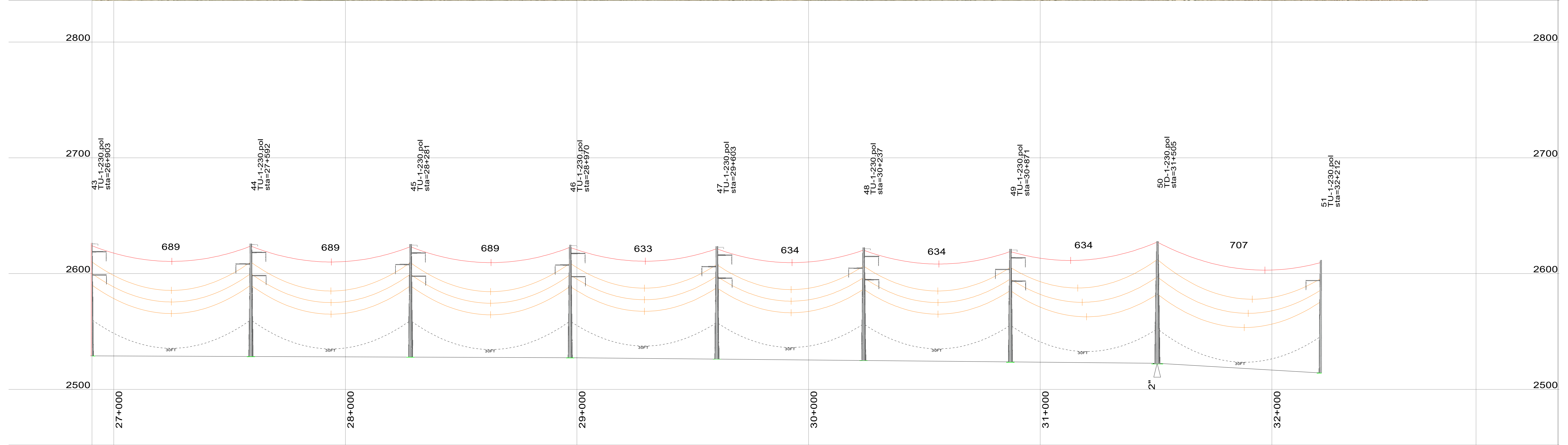
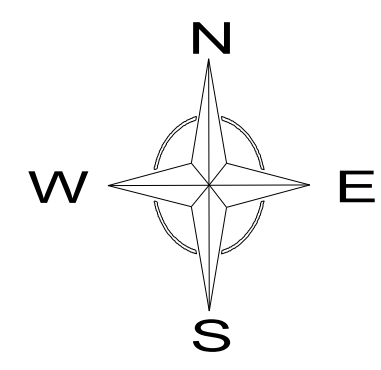
200.0 ft. Horiz. Scale
 40.0 ft. Vert. Scale



NO.	REVISION	DATE	BY
C	ADD DISTURBANCE AREAS	7/14/20	MDP
B	REVISED SUBST LOC	2/11/20	MDP
A	FOR REVIEW	11/20/19	MDP

ARATINA SOLAR PROJECT
 8MINUTE SOLAR ENERGY
PRELIMINARY PLAN/PROFILE
230-kV GENERATION TIE-LINE
STRUCTURES 36 TO 43

DATE	PROJ. NUM.	SHEET
NOV, 2019	190086	6 OF 8



9 - 50, 0kV, 1-2-7 strand ehs_steel.wir, Ruling Span 683 (ft), Tension 2682 (lbs) at 60 (deg F) Initial, Displayed 120 Deg F Creep 2279 (lbs)
 50 - 53, 0kV, 1-2-7 strand ehs_steel.wir, Ruling Span 707 (ft), Tension 2682 (lbs) at 60 (deg F) Initial, Displayed 120 Deg F Creep 2298 (lbs)
 9 - 50, 230kV, magnolia_aac.wir, Ruling Span 683 (ft), Tension 3763 (lbs) at 60 (deg F) Initial, Displayed 212 Deg F Creep 2146 (lbs)
 50 - 53, 230kV, magnolia_aac.wir, Ruling Span 706 (ft), Tension 3763 (lbs) at 60 (deg F) Initial, Displayed 212 Deg F Creep 2191 (lbs)

- NOTES:**
1. TERRAIN AND AERIAL PHOTOGRAPH ARE PUBLICLY AVAILABLE DATA. FINAL DESIGN WILL BE BASED ON CURRENT TERRAIN AND PLANIMETRIC SURVEY.
 2. PROPERTY BOUNDARIES ARE FROM KERN COUNTY DATABASE. FINAL DESIGN WILL BE BASED ON A CURRENT ALTA SURVEY.

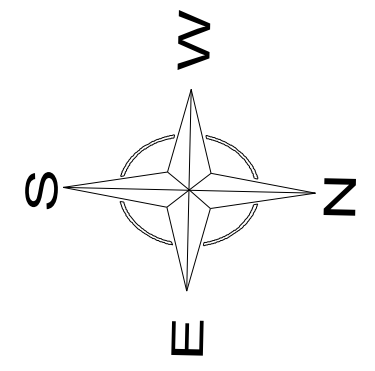
200.0 ft. Horiz. Scale
 40.0 ft. Vert. Scale



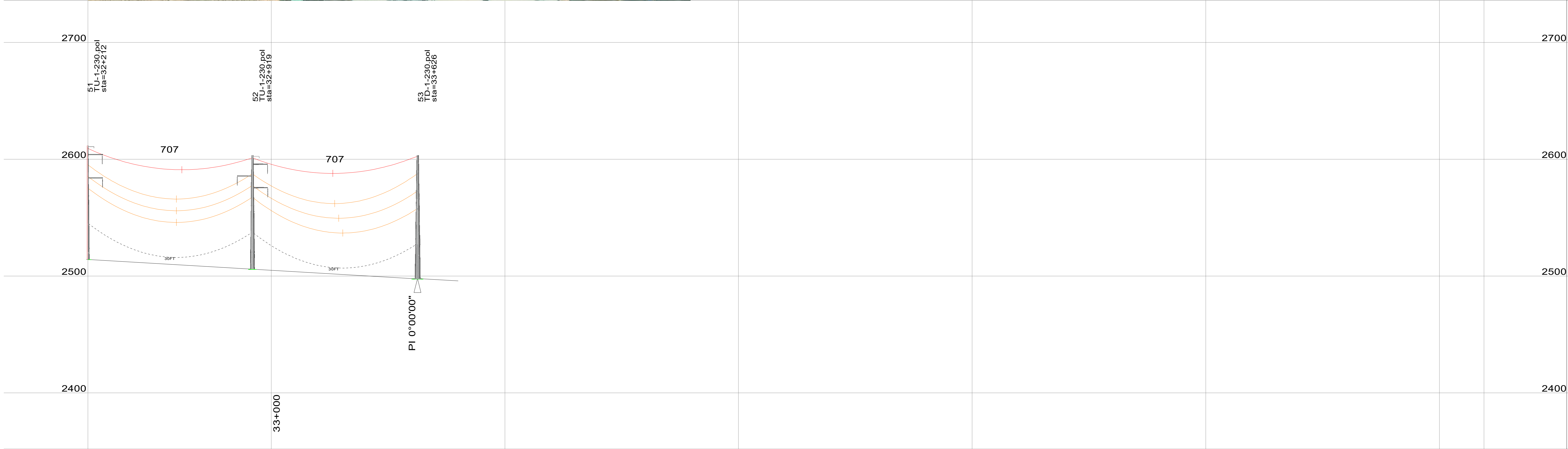
C	ADD DISTURBANCE AREAS	7/14/20	MDP
B	REVISED SUBST LOC	2/11/20	MDP
A	FOR REVIEW	11/20/19	MDP
NO.	REVISION	DATE	BY

ARATINA SOLAR PROJECT
 8MINUTE SOLAR ENERGY
PRELIMINARY PLAN/PROFILE
230-kV GENERATION TIE-LINE
STRUCTURES 44 TO 51

DATE	PROJ. NUM.	SHEET
NOV, 2019	190086	7 OF 8



EAFB-29



50 - 53, 0kV, 1-2-7_strand_ehs_steel_wir, Ruling Span 707 (ft), Tension 2682 (lbs) at 60 (deg F) Initial, Displayed 120 Deg F Creep 2298 (lbs)
 50 - 53, 230kV, magnolia_aac_wir, Ruling Span 706 (ft), Tension 3763 (lbs) at 60 (deg F) Initial, Displayed 212 Deg F Creep 2191 (lbs)

NOTES:

1. TERRAIN AND AERIAL PHOTOGRAPH ARE PUBLICLY AVAILABLE DATA. FINAL DESIGN WILL BE BASED ON CURRENT TERRAIN AND PLANIMETRIC SURVEY.
2. PROPERTY BOUNDARIES ARE FROM KERN COUNTY DATABASE. FINAL DESIGN WILL BE BASED ON A CURRENT ALTA SURVEY.

200.0 ft. Horiz. Scale
 40.0 ft. Vert. Scale



NO.	REVISION	DATE	BY
C	ADD DISTURBANCE AREAS	7/14/20	MDP
B	REVISED SUBST LOC	2/11/20	MDP
A	FOR REVIEW	11/20/19	MDP

ARATINA SOLAR PROJECT
 8MINUTE SOLAR ENERGY

PRELIMINARY PLAN/PROFILE
230-kV GENERATION TIE-LINE
STRUCTURES 52 TO 53

DATE	PROJ. NUM.	SHEET
NOV, 2019	190086	8 OF 8